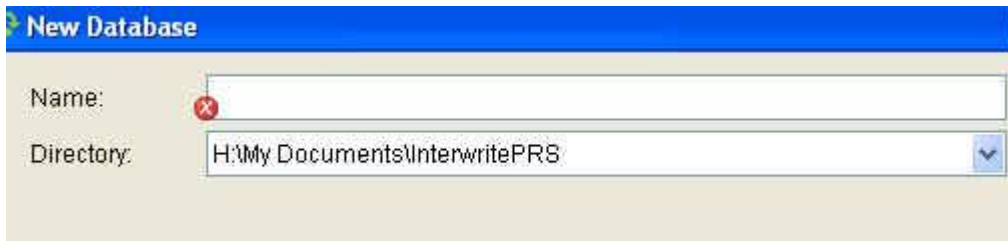
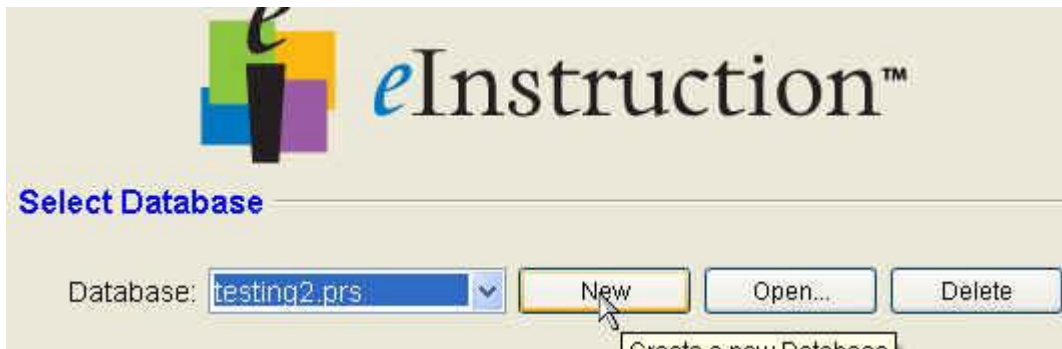


Getting setup to use PRS 5.0

Step 1: After installing PRS version 5, make sure to register the PPT plug-in. You will need to do this in the classrooms also. Select “install support for PPT”.



Step 2: Select your database. Select where you want PRS to save your files.



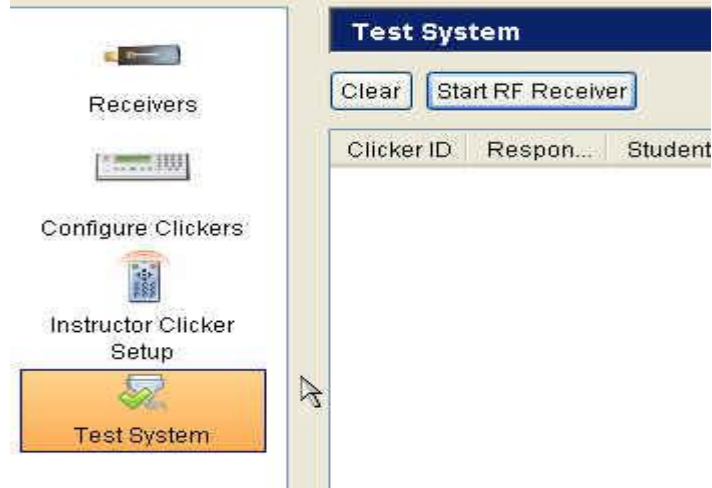
Step 3: Set up your Hardware. Make sure you have plugged in and installed your PRS USB receiver before continuing.



Step 4: Click the first tab **Receivers** and then click **Scan Ports** (your receiver must be plugged in). The software will scan your computer and make sure your receiver is properly enabled. This is a great way to troubleshoot prior to a class session.



Step 5: You can then opt to configure your own clicker. You can also choose Instructor setup to create a Master clicker for your class. You can even test your system if you have a clicker and your receiver ready. (See specific tutorials on these optional items).

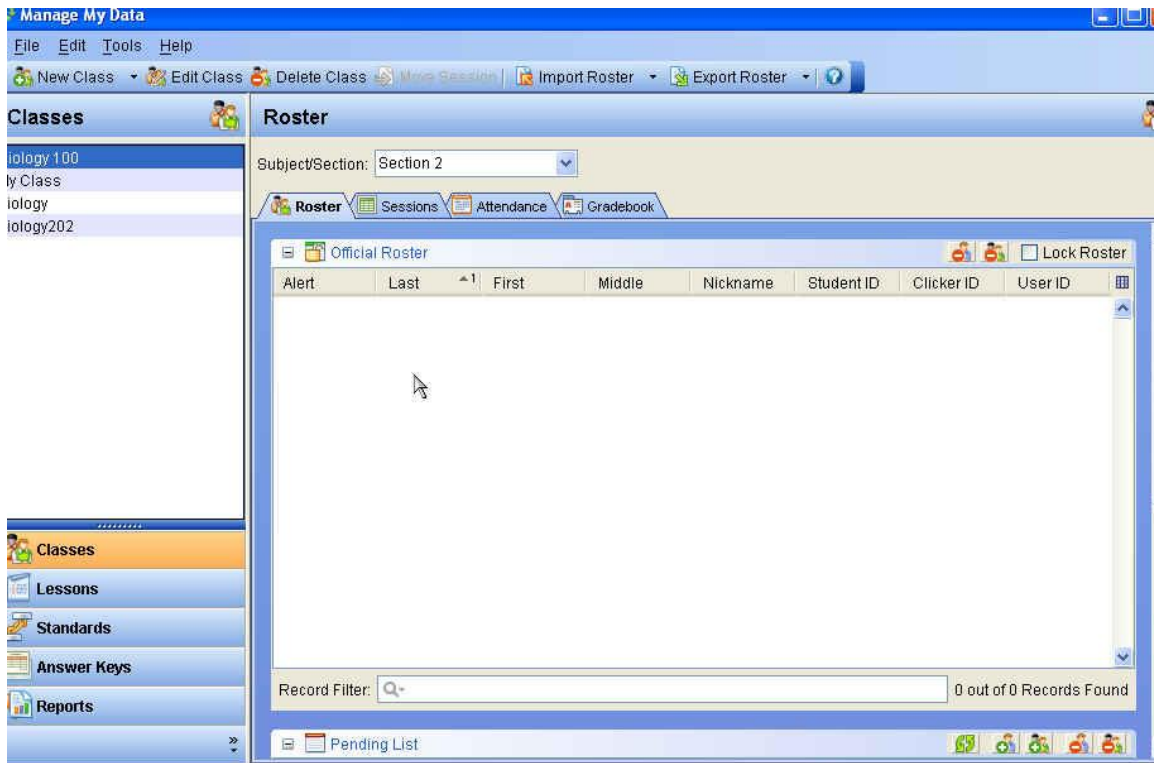


Step 6: Now that you have set up your system, you are ready to create a new class. (click here for step-by-step directions and video) The class wizard walks you through each step.



Step 7: You can now either start a session or manage your data. There are a variety of ways of collecting your students' responses in your Database: *direct Participation* in a Session, using PowerPoint, or asking questions *on the fly*, *Self-Paced* testing, or *Homework* collection.

Step 8: Managing Data.

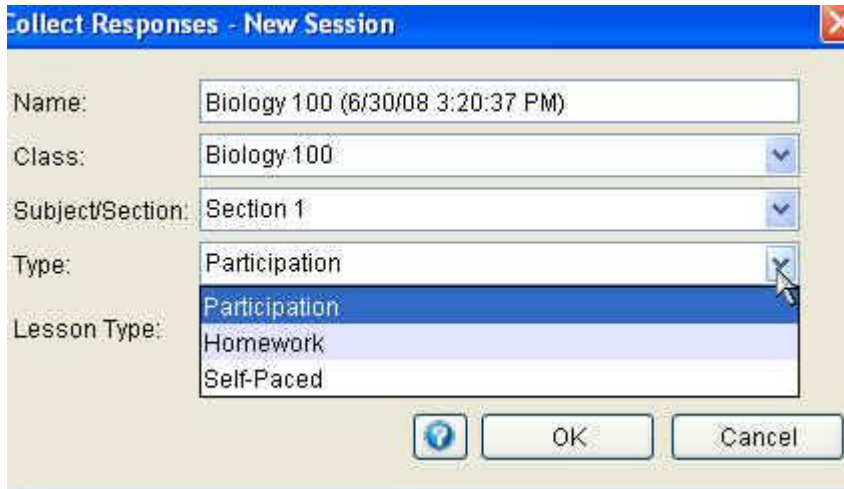


The manage data window will look similar to PRS version 4.4. You can view your classes, your lessons and your sessions. In this new version of PRS you can also take attendance each day that is totaled automatically at the end of the class for you. See separate tutorials for specific areas of interest.

Step 9: Collecting Responses. When you are ready to start a session, regardless of which format or type you are going to run, start at the **Collect Response** button.

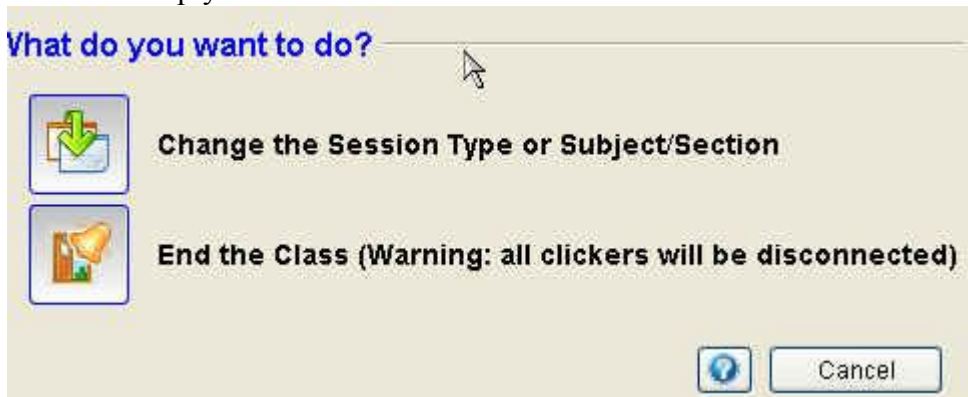


Step 10: Make your session selections here.



You can choose for example to run a self-paced quiz using a pre-made lesson in PRS or simply choose the option of “impromptu” under lesson type to give spontaneous questions on the fly. See individual tutorials on the clicker page for these options.

Step 11: When you end a session you get the option to change the type of session or simply to save and end it.



Step 12: PRS response bar. The response bar has not changed too much from the prior version.



Step 13: PPT. If you plan to run your session from PPT. Follow the above steps to set up your PRS system, but then launch and run PPT just like in the older version instead of starting a session from the PRS interface.